

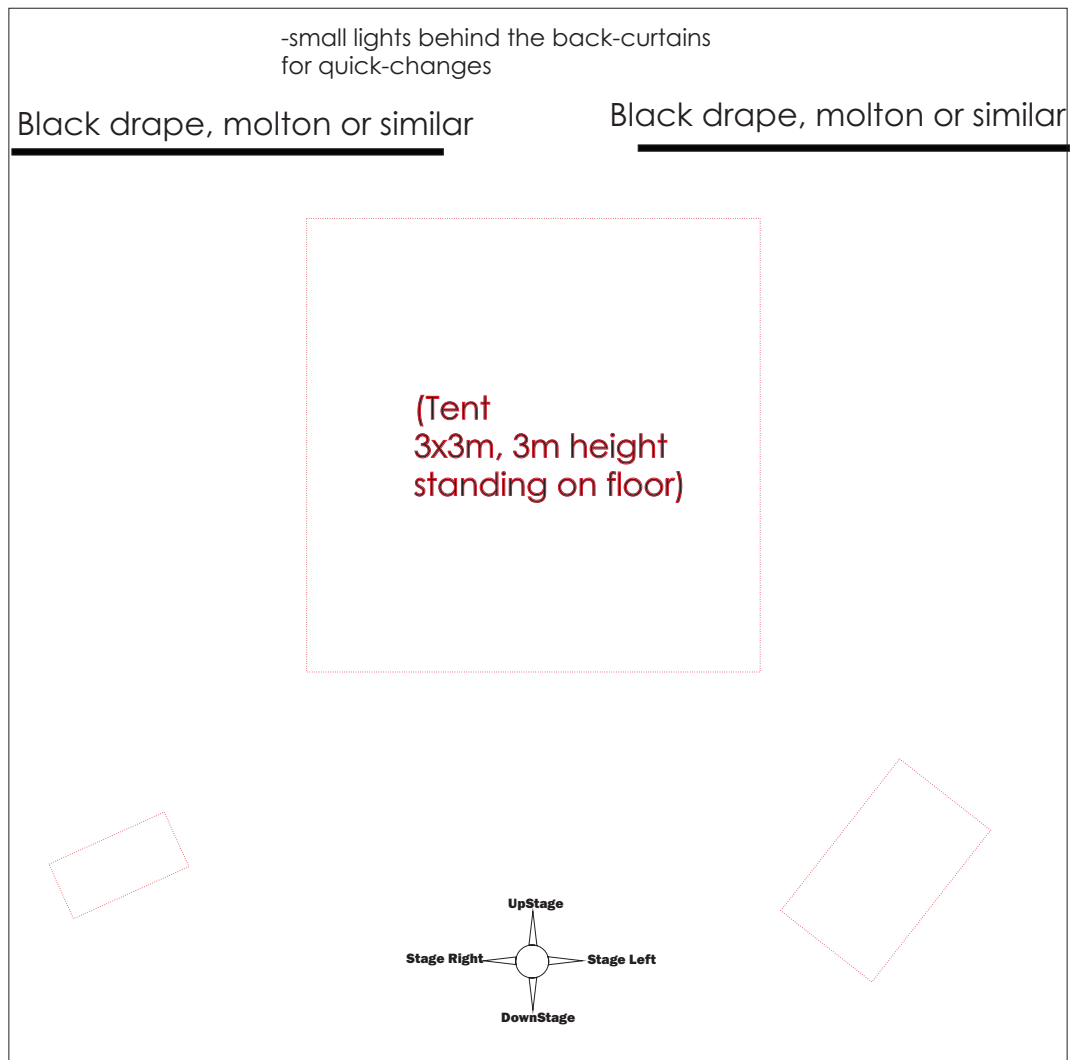
# Anatomia Lear

## Technical rider

### Page 1 of 4, Stage plot

- Ideal stage size: 10 x 9m, rigging height 5 m
- Minimum: 6x 7 m, rigging height 3,5 m
- Black box-type of stage, with black floor and walls.
- Black curtains or screens, min. 1 m from the back wall that can have an opening in the middle for entrance (for quick-changes)

(-Production set design shown in red, set design on the floor.)



#### **Production Schedule:**

Minimum time from load-in to performance: 9 h, depending on rigging possibilities and lighting desk.

- Set design 1 h
- Lights and sound: minimum of 8 h
- Technical runthrough: 2 h

**Note:** one cigarette will be smoked on stage during the performance.

Technical contact:

**Mari Agge** Lighting designer

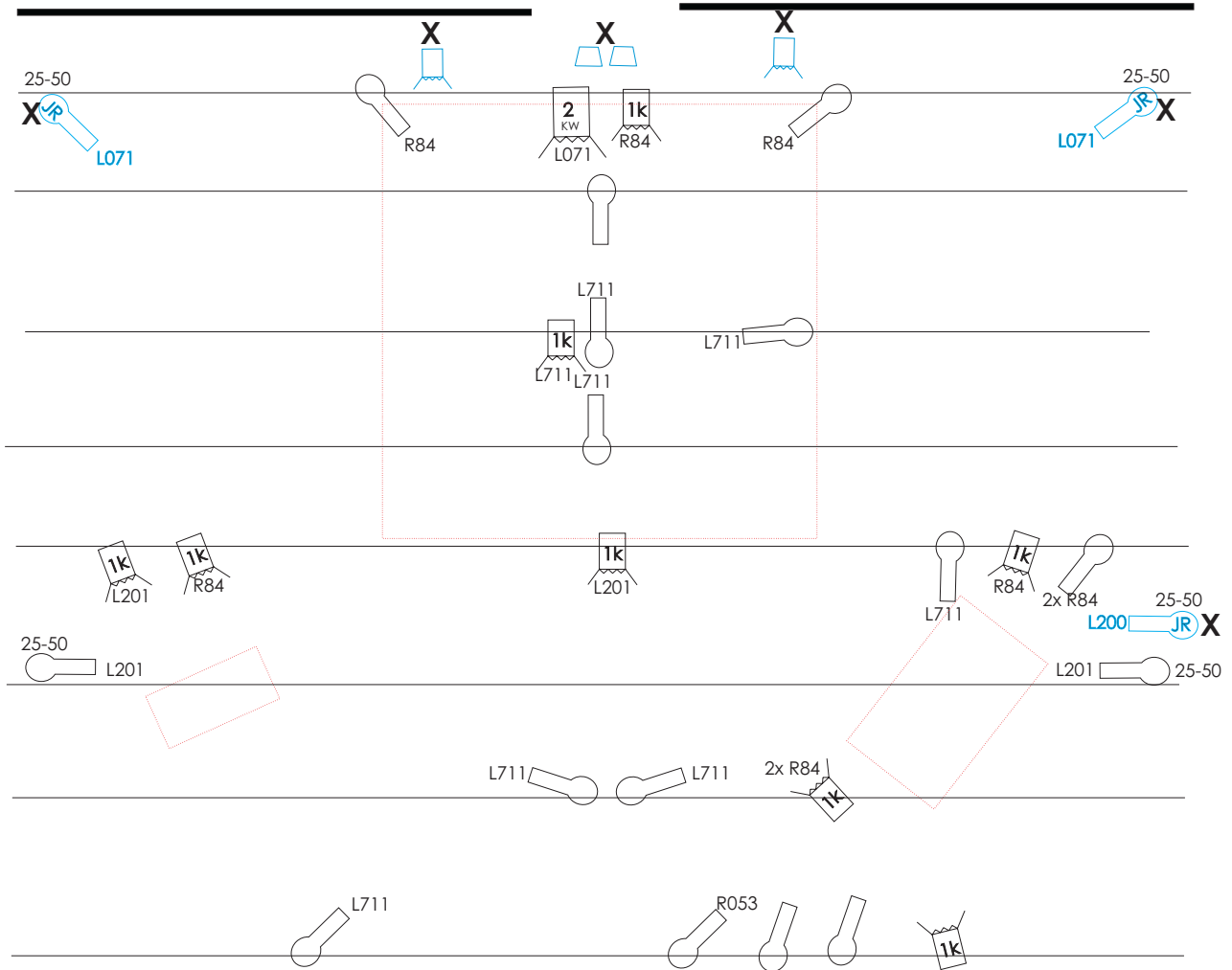
e-mail: [mari.agge@welho.com](mailto:mari.agge@welho.com)

mobile. +358-40-5915514

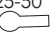



# Anatomia Lear

## Page 2 of 4, Lighting plot

-small lights behind the back-curtains  
for quick-changes

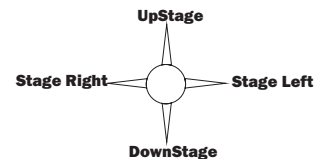


### Equipment & key to symbols See also page 3

- |  |  |
|--|--|
|  1 x 2000W Fresnel/PC         |  5 x ETC S4 Zoom 25-50 degrees  |
|  8 x 650W or 1000W Fresnel/PC |  14 x ETC S4 Zoom 15-30 degrees |
|  2 x 650W Fresnel/PC          |  2 x 150W Flood                 |

**-30 x dimmer channels** **Note:** -all channels marked with x (blue) on floorstands

Technical contact:  
**Mari Agge** Lighting designer  
 e-mail: [mari.agge@welho.com](mailto:mari.agge@welho.com)  
 mobile. +358-40-5915514



# Anatomia Lear

## Lighting equipment

Page 3 of 4

### **Provided by the production "Anatomia Lear":**

-color filters/ gels

### **Provided by the venue:**

(All equipment must be approved with the production lighting designer prior to arrival to the venue.)

### Control:

-1 x digital lighting desk, with programmable cues and A/B- crossfaders.  
Preferred options: ETC Congo or Compulite Photon/Spark/Vector

-needed amount of dimmer channels to connect the equipment according to the lighting plot. All fixtures in separate channels.

-needed amount of cabling for the equipment

### Fixtures/lamps:

All the fixtures must be in full working order, equipped with cables, clamps, safety wires, barndoors/shutters/irises and filter frames.

The wattage and amounts may vary according to the size of the venue.

- 1 x 1000W or 2000W Fresnell or PC
- 8 x 650W or 1000W Fresnell or PC
- 19 x ETC or 1000W zoom profile/Leko
- 2 x 650W Fresnell /PC
- 2 x 150W Fresnell

### Contact:

**Mari Agge** Lighting designer

e-mail: [mari.agge@welho.com](mailto:mari.agge@welho.com)

mobile. +358-40-5915514

# Anatomia Lear

## Sound equipment

Page 4 of 4

### **SOUND:**

#### **Contact:**

Kristian Ekholm, mobile +358 400 777 177, kristian@storijapan.net

#### **PA - system:**

- Professional stereo PA system with sub basses. This includes professional amplifiers, EQ's, crossovers.
- Two tops flying or on stands upstage, two tops on sides on floorlevel downstage. Preferably four tops (minimum two) for surround placed behind or under audience seatings.
- Two active speakers on stage, small in size
- 230 V / 10 A Powerplug for soundequipment on stage
  
- Mixingconsole with the following requirements:
  - 10 channels in (2 with phantom)
  - minimum of 6 aux (post) sends or 2 aux sends and 4 additional group channels
  
- One professional MiniDisc player
  
- Two condenser mic's hung on top of stage (mics provided by Anatomia Lear)

#### **Channel list:**

- 1 MiniDisc L
- 2 MiniDisc R
- 3 audiointerface line-in 1
- 4 audiointerface line-in 2
- 5 audiointerface line-in 3
- 6 audiointerface line-in 4
- 7 audiointerface line-in 5
- 8 audiointerface line-in 6
- 9 stage condenser mic 1 (mic provided by Anatomia Lear)
- 10 stage condenser mic 2 (mic provided by Anatomia Lear)
- AUX 1 line out / active speaker on stage
- AUX 2 line out / active speaker on stage
- AUX 5 left downstage channel out
- AUX 6 right downstage channel out
- AUX 5 left surround channel out
- AUX 6 right surround channel out